

SUSTAINABLE HOT END PROCESS OPTIMIZATION BY

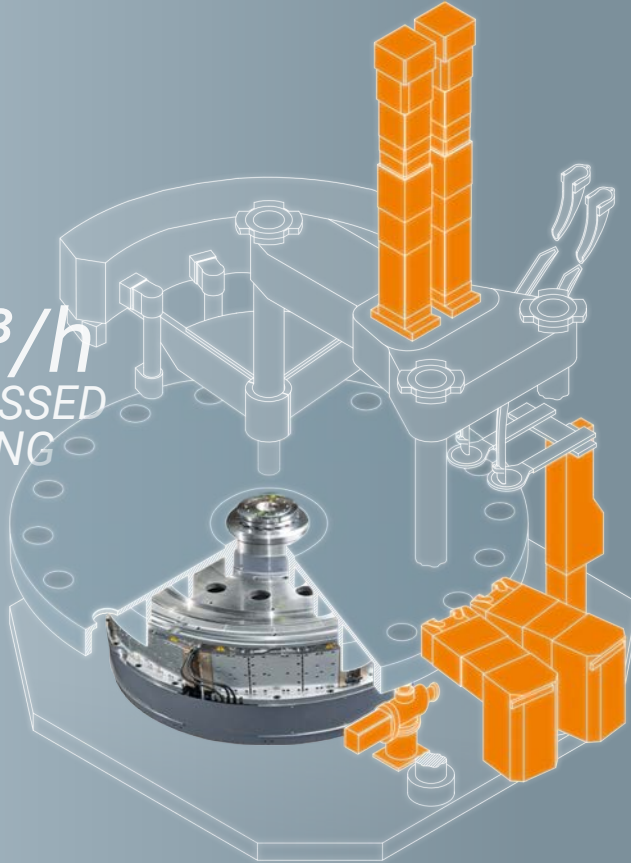
# ESERVO PERFORMANCE COMPONENTS



20%  
HIGHER  
OUTPUT

130m<sup>3</sup>/h  
COMPRESSED  
AIR SAVING

80%  
ENERGY  
SAVING



ESERVO  
PRESSING  
CYLINDER

ESERVO  
MAIN  
CLOSER

ESERVO  
FUNNEL

ESERVO  
PRESS  
SUPPORT

ESERVO  
PUSHER

ESERVO  
PUMP

ESERVO  
DIRECT  
DRIVE

## NEXT GENERATION SERVO PRESS-TECHNOLOGY

**WALTEC**'s latest generation *ESERVO* performance components deliver power only when needed and through this generating substantial savings in energy and compressed air. Servo movements are more precise and repeatable resulting in higher efficiencies. At the same time servo technology improves operator health and safety through the reduction of in-air oil pollution and residues during operation.

Now is the right time to switch to **WALTEC**'s *ESERVO* performance components and replace your inefficient conventional hydraulics and old energy intensive pneumatics. Benefit from servo-controlled process movements – totally readable, recordable and repeatable. Industry 4.0 is just one step ahead. Start to digitalize your manufacturing process with *ESERVO* performance components today.

**ECONOMICS BY WALTEC –  
EFFICIENCY & SUSTAINABILITY**

**START  
SAVING  
MONEY**

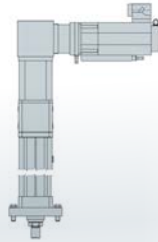
**NOW!**

SUSTAINABLE HOT END PROCESS OPTIMIZATION BY

# ESERVO PERFORMANCE COMPONENTS

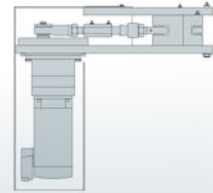


## ESERVO PRESSING CYLINDER



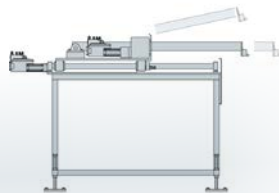
- **Less energy consumption:**  
save up to 85% energy costs compared to conventional hydraulics
- **Lower emissions** (operator health) and **less danger** (fire):  
no oil needed and higher safety as zero oil inside
- **Heavy duty performance:**  
pressing force up to 20 tons
- **Extended lifetime:**  
including proprietary technology

## ESERVO MAIN CLOSER



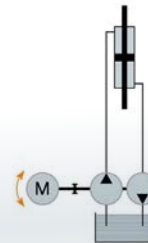
- **Speed up press cycles:**  
save up to 100 ms valuable cycle time
- **Less compressed air:**  
save up 80 m<sup>3</sup>/h
- **Extended mold lifetime:**  
controlled and smooth movement

## ESERVO PUSHER



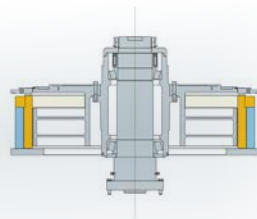
- **Less energy consumption:**  
save up to 10 m<sup>3</sup>/h compressed air
- **Improved glass surface quality:**  
variable speed control and soft touch function
- **Less maintenance needed:**  
due to contemporary machine design

## ESERVO PUMP



- **Up to 80% lower energy consumption:**  
powered only when pressing force is needed
- **Improved sustainability:**  
save up to 970 litres of oil compared to conventional hydraulics
- **Higher and variable production speed:**  
benefit from more valuable process cycle time

## ESERVO DIRECT DRIVE



- **High torques:**  
up to 70.000 Nm
- **Short table indexing times:**  
up to 0,25 seconds
- **Smooth movement:**  
free from backlash and jolt
- **Online drive supervision and low maintenance**



DISCOVER MORE:  
[WALTEC.DE/ESERVO](http://WALTEC.DE/ESERVO)

WALTEC MASCHINEN GMBH

Kronacher Straße 2a • D-96352 Wilhelmsthal (Steinberg) • Germany • T +49 9260 99010 • [info@waltec.de](mailto:info@waltec.de)